



NUVO™

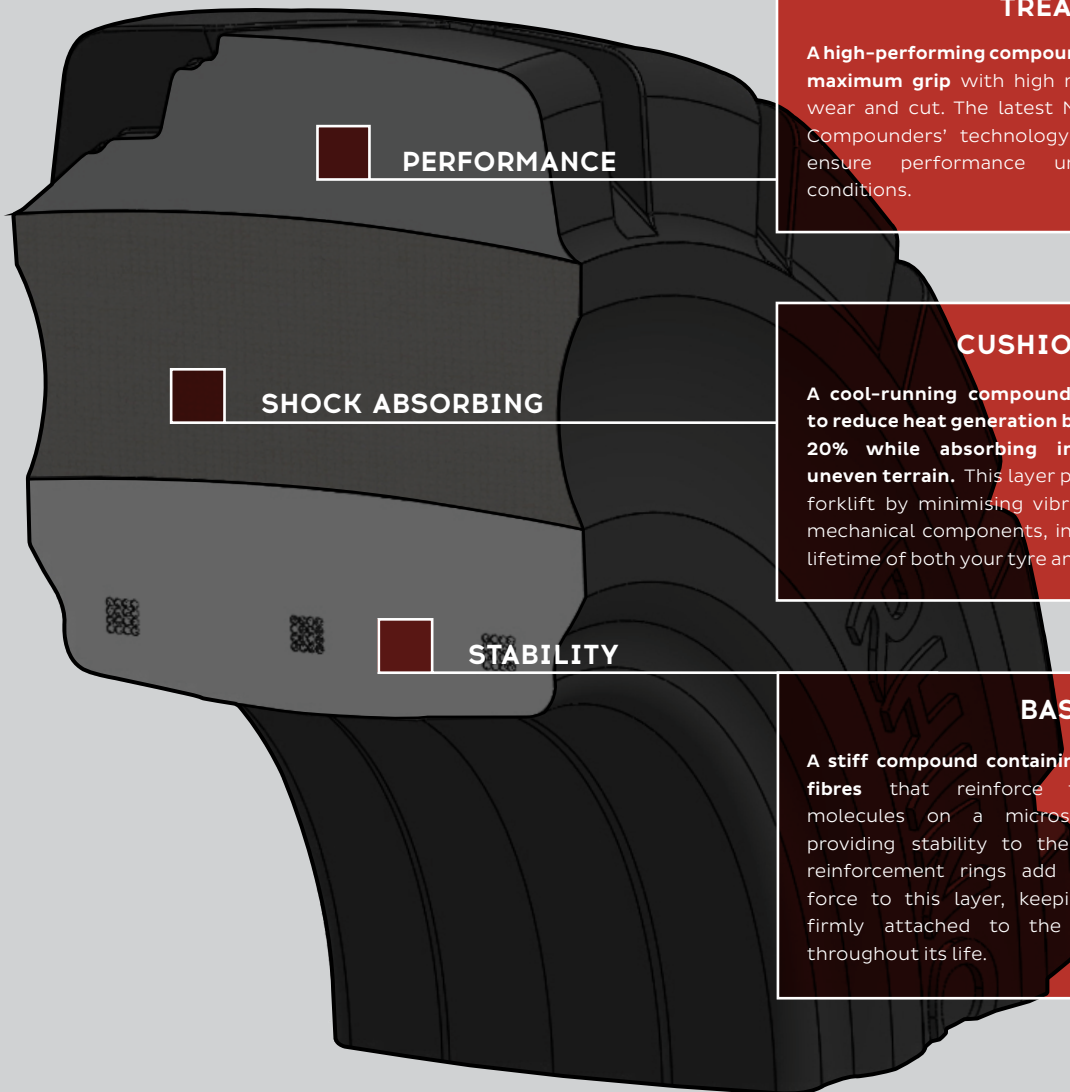
RHINO

Superior quality, locally produced.

South Africa's premium solid forklift tyre.

NUVO™ IS PROUD TO INTRODUCE NUVO™ RHINO - THE ONLY PREMIUM SOLID FORKLIFT TYRE DEVELOPED AND MANUFACTURED IN SOUTH AFRICA FOR THE AFRICAN ENVIRONMENT.

THREE LAYERS, THREE COMPOUNDS.



PERFORMANCE

TREAD LAYER

A high-performing compound delivering maximum grip with high resistance to wear and cut. The latest Nuvo Rubber Compounders' technology is used to ensure performance under harsh conditions.

SHOCK ABSORBING

CUSHION LAYER

A cool-running compound engineered to reduce heat generation by as much as 20% while absorbing impact from uneven terrain. This layer protects your forklift by minimising vibration to the mechanical components, increasing the lifetime of both your tyre and forklift.

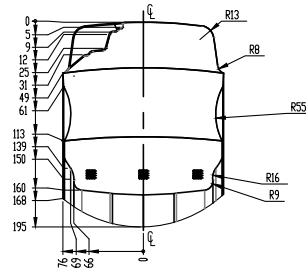
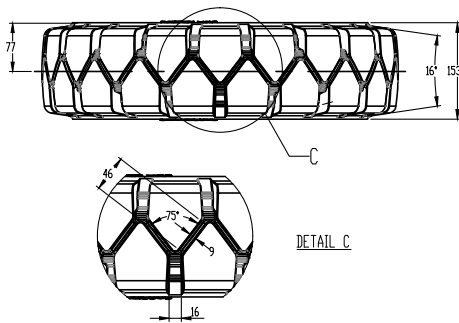
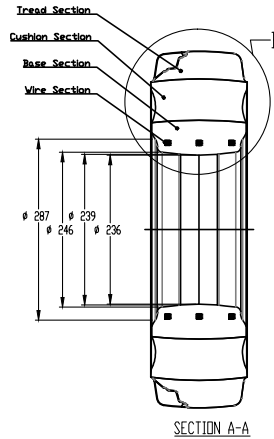
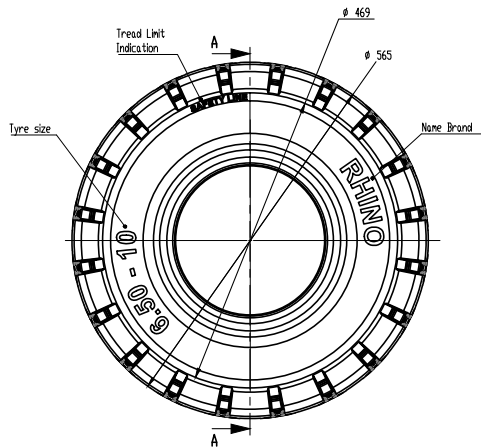
STABILITY

BASE LAYER

A stiff compound containing polymeric fibres that reinforce the rubber molecules on a microscopic level, providing stability to the tyre. Steel reinforcement rings add compressive force to this layer, keeping the tyre firmly attached to the wheel rim throughout its life.



INNOVATE. ADVANCE. EXCEED.



BUILT TO LAST

A layered structure of three custom developed rubber compounds reinforced with steel ensures NUVO™ Rhino lasts longer, while providing a smoother, more controlled forklift ride. The rubber compounds were developed at NUVO™ Rubber Compounders, utilising four decades of rubber compounding expertise.

BUILT FOR AFRICA

NUVO™ Rhino was designed for the harsh working conditions of Africa. With a wide tread profile that increases lateral stability and load distribution in both wet and dry conditions, NUVO™ Rhino is ready for all seasons.

ENERGY EFFICIENCY

Minimising energy consumption is at the forefront of all NUVO™ developments, and our forklift tyres are no different. Through a reduction in rolling resistance of 12%, NUVO™ have ensured that your carbon footprint will be reduced when using Rhino tyres.

NUVO™ RHINO SPECIFICATIONS

Load capacity up to 20km/h

SIZE	RIM WIDTH (in)	TREAD WIDTH (mm)	OVERALL DIAMETER (mm)	DRIVE WHEELS (kg)	STEER WHEELS (kg)
15x4.5-8	3.00	100	375	1040	800
4.00-8	3.00	104	410	950	730
5.00-8	3.00	100	445	1415	1090
6.00-9	4.00	140	520	1885	1450
140/55-9	4.00	128	370	1170	900
16x6-8	4.33	140	405	1270	975
18x7-8	4.33	145	450	2125	1650
6.50-10	5.00	140	560	2340	1800
7.00-12	5.00	145	645	2910	2240
7.00-15	5.50	165	730	3545	2725
21x8-9	6.00	168	522	2755	2120
23x9-10	6.50	175	575	3160	2430
200/50-10	6.50	180	450	2470	1900
8.25-15	6.50	185	815	4745	3650
8.15-15 (28x9-15)	7.00	195	685	3445	2650
250-15	7.00	218	726	4640	3570
9.00-20	7.00	218	1018	5340	4450
300-15	8.00	232	810	5735	4410
10.00-20	8.00	212	1020	6000	5000
12.00-20	8.00	256	1098	7560	6300
23x10-12	8.00	225	590	3770	2900
27x10-12	8.00	220	680	3900	3000
355/65-15	9.75	310	820	7085	5450